

# Acquiring Design Data for Construction

## Civil Engineering & Construction

29 June 2016

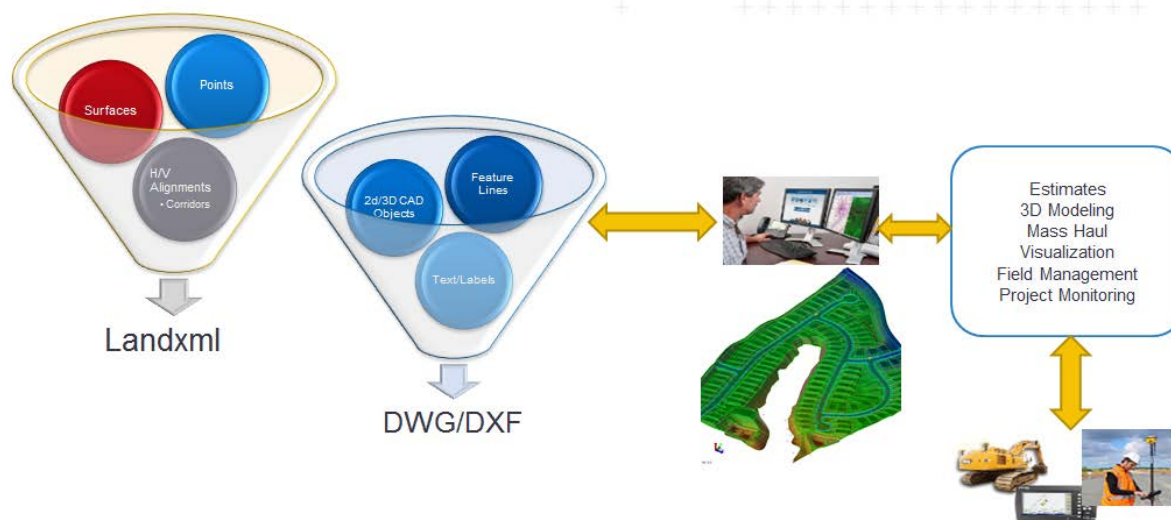
## Introduction

To build a model in Trimble Business Center –HCE to be used in the field for either SCS900 or GCS900 systems requires gaining access to the Engineering CAD files. These files can come in many formats and styles. To simplify this process the following information is required.

## Data from Autocad Civil 3D

Autocad Civil 3D Design data is typically made up of multiple proprietary data types. The design data is typically surface objects, points, alignments, and corridors. All other data is a combination of 2D or 3D lines, arc, circles, etc. The best delivery for preparing the data for construction is to acquire a LandXML file of the project along with a DWG file of all data. The DWG however must be exported so that the proprietary autocad object become simple cad entities.

## Autocad Civil 3D



## Export LandXML Data from Autocad Civil 3D

To export the LandXML Data of a project, open Autocad Civil 3D:

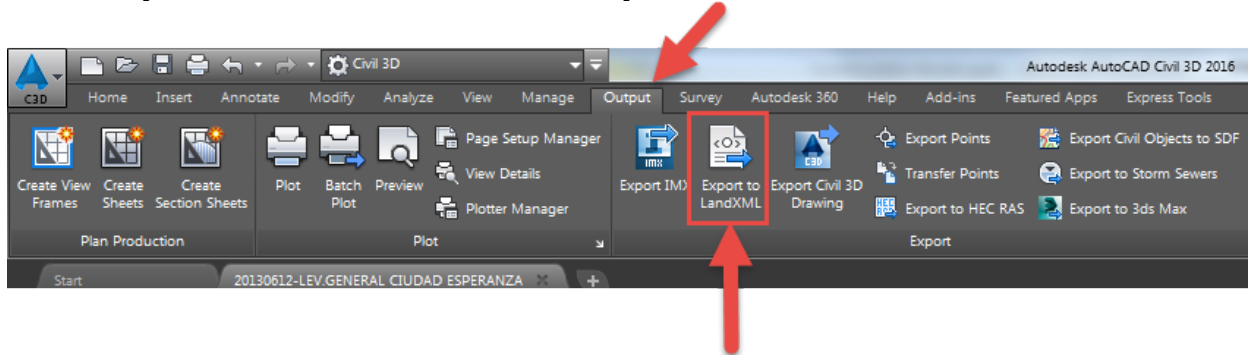
**This document is for informational purposes only and is not a legally binding agreement or offer. Trimble makes no warranties and assumes no obligations or liabilities hereunder.**

Trimble Civil Engineering & Construction Division, 10368 Westmoor Drive, Westminster, CO 80021, USA

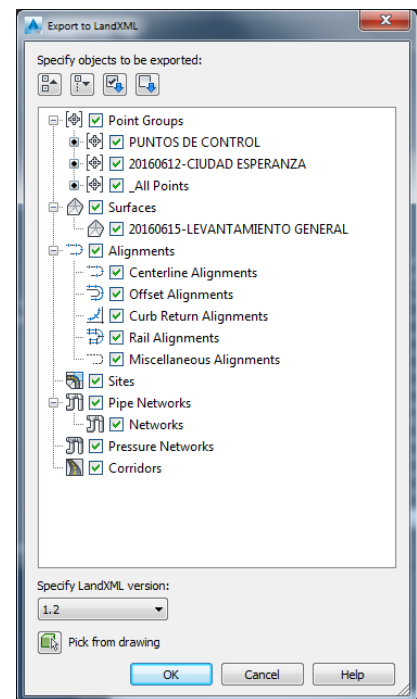
© 2014, Trimble Navigation Limited. All rights reserved. Trimble, the Globe & Triangle logo, SITECH and VisionLink are trademarks of Trimble Navigation Limited, registered in the United States and in other countries. All other trademarks are the property of their respective owners.



1. Open the Master Design Drawing which contains the source project data. (the alignments, corridors and/or surface.
2. On the Output Tab of the Civil 3D ribbon, Click Export to LandXML

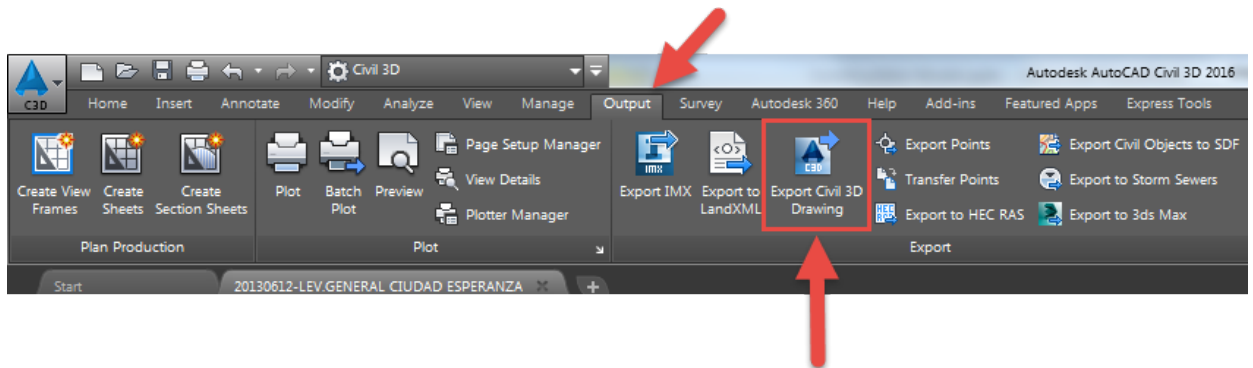


3. In the Export to LandXML Dialog, select the design objects to export.
  - a. Leave all selected
  - b. Should include alignments, points, surfaces and corridors if available. (You must be in the correct drawing to do this.
4. Click OK.
5. Choose a location to save the .xml file
6. Change the Name of the file (Optional)



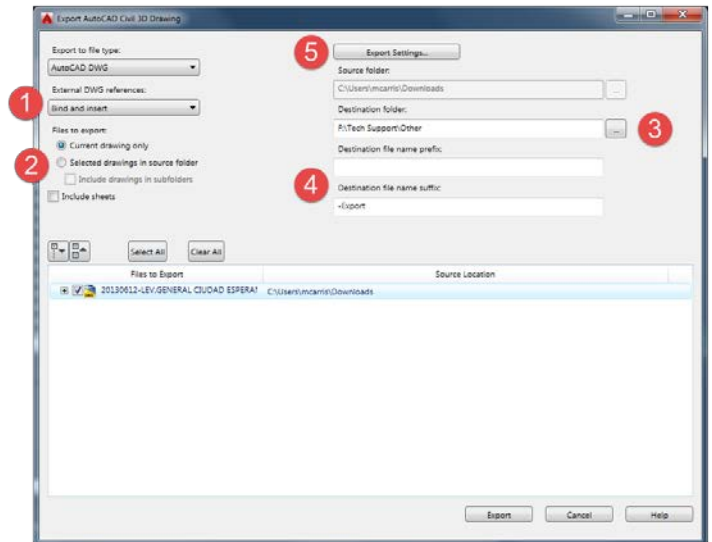
# Export DWG file

1. On the Output Tab in Civil 3D click the Export Civil 3D

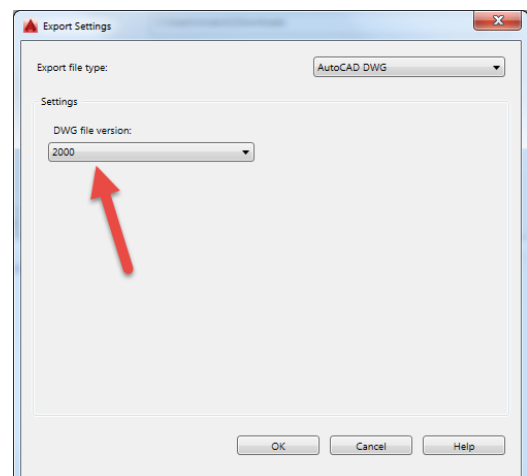


2. Set the following options in the Export Autocad Civil 3D Drawing dialog

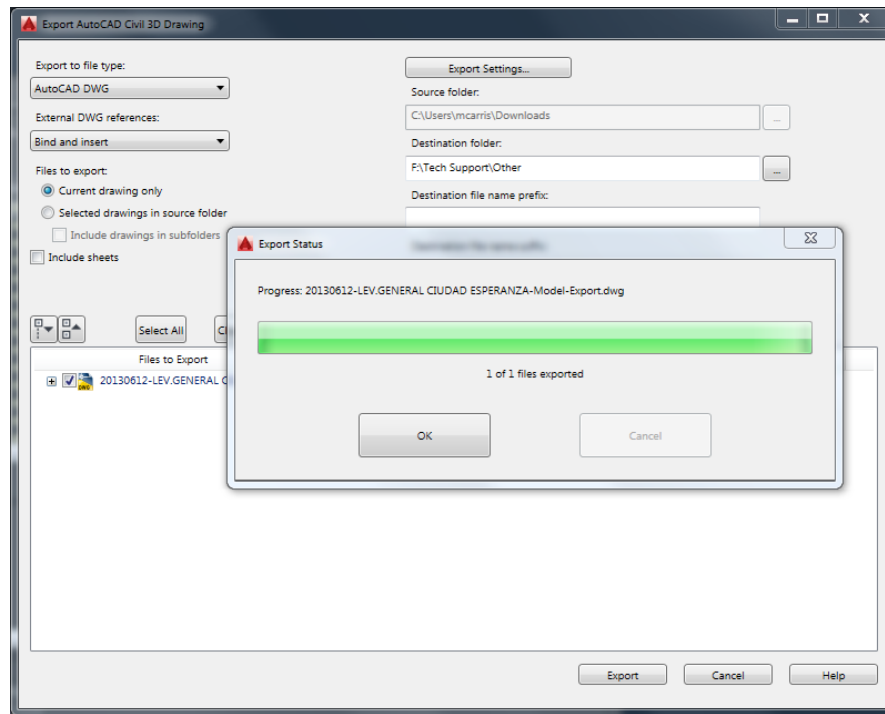
1. Set External DWG References to : Bind and Insert
2. Set Files to export to : Current drawing only
3. Set the path for the folder you want the file exported to.
4. Enter a Suffix or Prefix for the File name. (optional)
5. Click the Export Settings button.



6. Set the DWG file version to 2000.
7. Click OK to close the Export Settings dialog



8. Click Export on the Export Autocad Civil 3D Drawing dialog box.
9. The results will show:



10. Click OK to close the Export Status
  11. Click Cancel to Close the Export Autcad Civil 3D Drawing dialog.
3. Repeat as necessary.
  4. Zip the DWG and XML files together and send to...