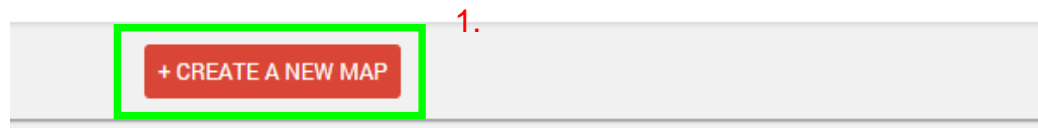


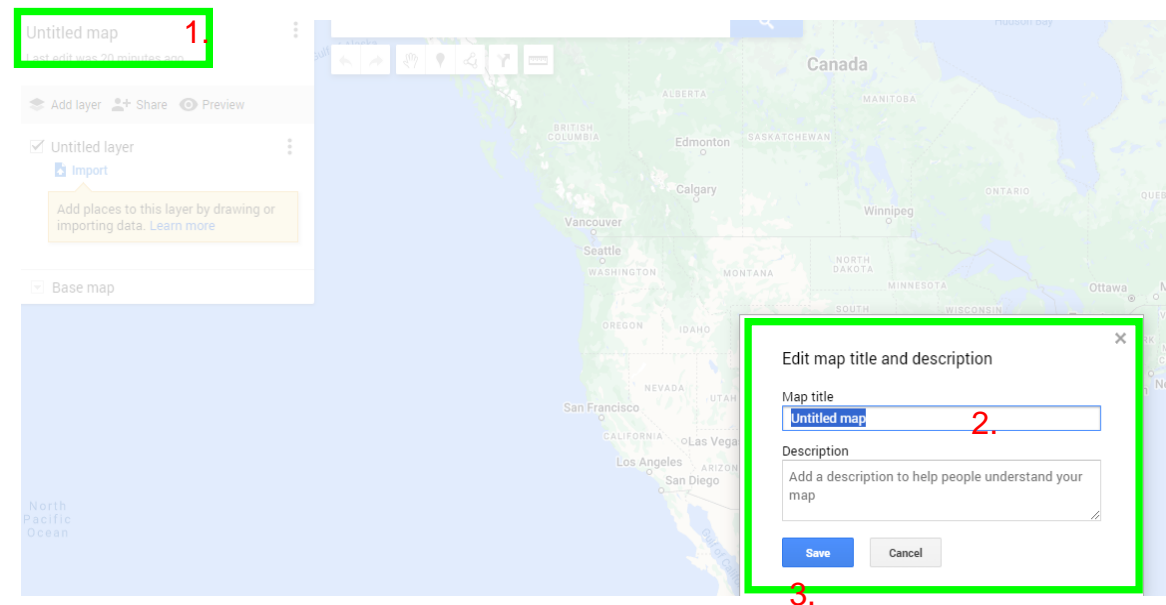
This is instruction on how to make the line-weight of the data that is exported to Google Earth bolder in a faster way than each line at a time. A KMZ will need to be created when exporting the line-work from TBC. You will need a GMAIL account (at this point, this is the only way I know to get the line-weight changed) to access <https://www.google.com/maps/d/> Using this method will keep the same colors as when it was exported from TBC. You could do the Combine Multit Geometry inside Google Earth which will change the colors to one color.

Step 1. In My Maps. create a new map

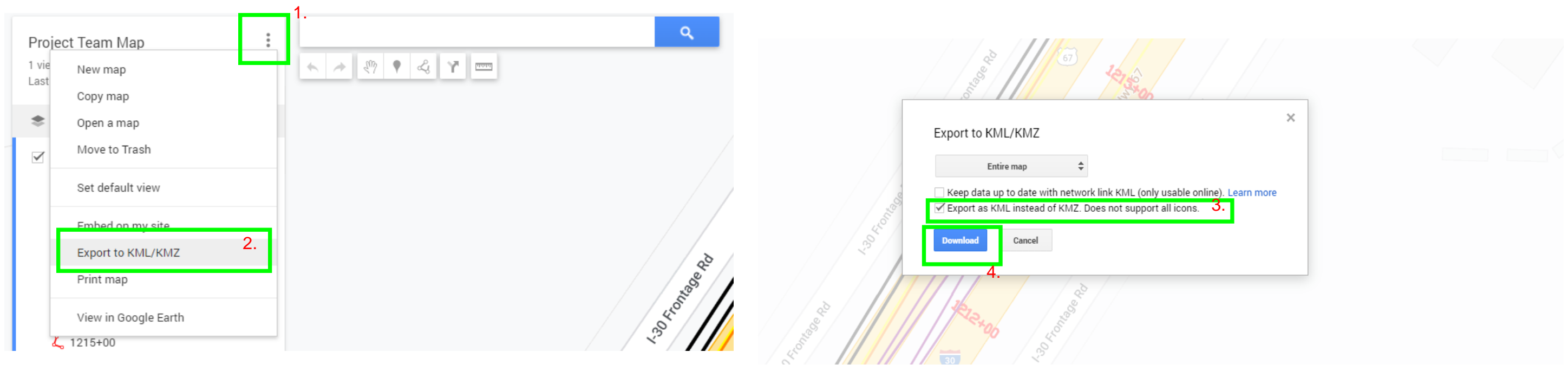
Google My Maps



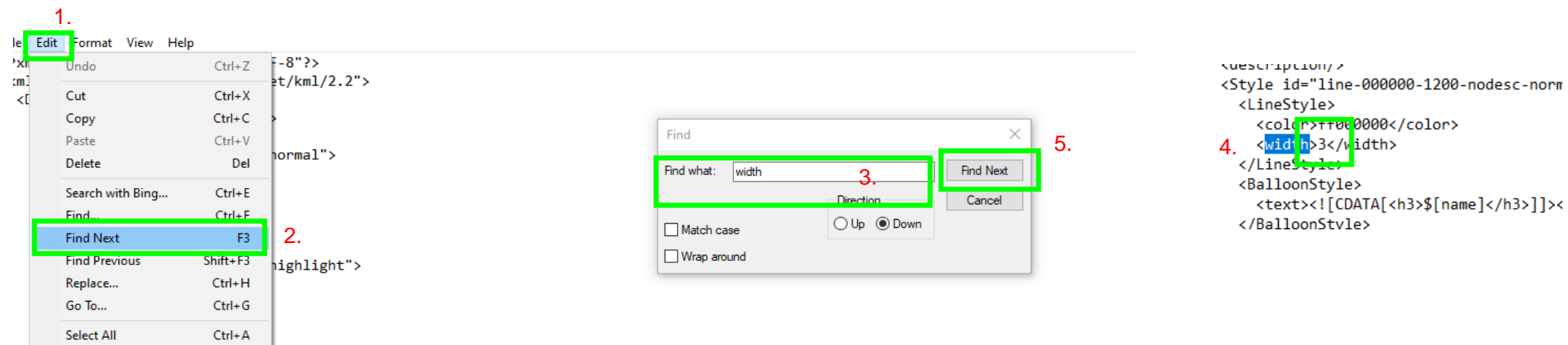
Step 2. In the next window. You will import the KML file. You also, have the chance to give this map a name. You can change the name by CLICKING on the "untitled map" work This will have a pop up window where you can change the name.



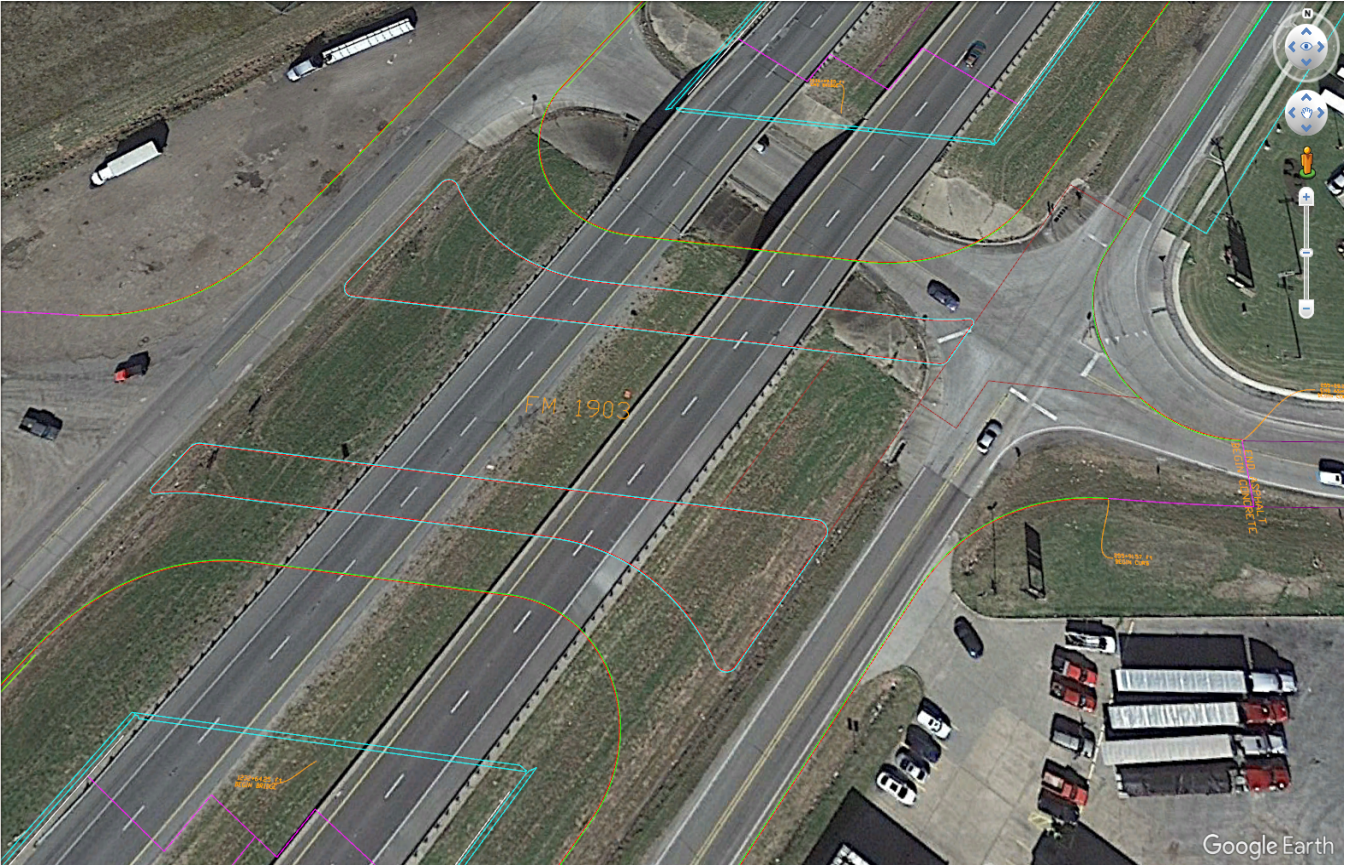
Step 3. Now you can save the map as a KML. The KML is needed to make those quick changes for the line-weight. IF, you export from TBC to Google Earth and do a save as KML. This will not have the script to make the changes of the line width.



Step 4. The KML will now be downloaded and has been placed in the download folder. You can move the KML to the another folder directory. Once the KML has been moved. The file can be opened in NotePad. Right click on the file, Open with NotePad. Once the KML script open, you can now start editing the line width. Click on Edit and select Find Next. The Find pop up window will appear. You will need to type "width" and click Find Next. This will highlight the word width. Next to the word Width is the width scale that will be changed to the width of your choice. Make the change of the width and click Find Next to find the next word width. Continue clicking and changing the width as you choose until there are no more width scale to change. Now, you can save the script and the KML can be opened in Google Earth. Verify all line-weight has been changed to the correct width. if not, restart this step.



Before editing line-weight



After editing lineweight

